

**THANK YOU FOR USING TIECHENG
BRUSHLESS PROFESSIONAL GRADE POWER TOOLS!**

TC·BL
Tiecheng Brushless

BRUSHLESS AIR COMPRESSOR

Manual book



TC·BL
Tiecheng Brushless

Zhejiang Tichop Tools Co.,Ltd

Add: Huacheng West Road 337,West City New Area,
Yongkang City Zhejiang Province,China.

Tel: 0086-579-87713236 Fax: 0086-579-87713056

**AC990/AC990-10L/AC990-30L
AC990X1/AC990K/AC991/AC992/AC993**

Safety instruction

To avoid fire, hurt body, electric shock and other accidents, Pls read and follow the safe instruction before using it.

1. Keep the work place clean.
2. Do not put the machine in wet or harsh condition place (dusty or full of explosive gas)
3. Electric shock: Do not touch the grounded objects. For example the conduit pipe, heating pipe, etc.
4. Kids and unrelated people do not close to the machine when its working.
5. Taking care of the machine when you don't use it. Pls release the air and dust water from tank and put it in the dry place.
6. Pls follow the rating volt, speed.
7. Protection of cable: don't tighten the power cable and keep distance of hot resource and oil.
8. Maintenance: clean the filter, check the cable and accessories. If not good, pls exchange it.
9. Pls turn off power source and the switch of the air compressor. When you not use it.
10. Avoid over-pressure setting: The maximum pressure is 0.9 MPa.
11. Warning: Pls use our factory's parts for repair.
12. Power volt: Pls check the volt, Such as 180V-250V, if Not right, The machine will be damaged by abnormal volt.
13. The compressor is only for the air pressurize, not for other gas, dust or explosive material.
14. Don't use forced flammable and combustibile air and liquid.
15. Don't torch the hot parts of compressor. Such as the Cover of motor, Echaust pipe. etc.
16. The cable section is not less than .2 square mm and not need too long.
17. It is forbidden to crash. Pls put it suitable position when you work it.

Main Parameter

Modle	Pressure	Flow	Power	Air tank	Voltage	N.W.
AC990	0.3-1.2Mpa	250L/min	1500W	0L	AC220V	13KG
AC990-10L	0.3-1.2Mpa	350L/min	2000W	10L	AC220V	15KG
AC990-30L	0.3-1.2Mpa	250L/min	1500W	30L	AC220V	15KG
AC990X1	0.3-1.2Mpa	250L/min	1500W	17L	AC220V	20KG
AC990K	0.3-1.2Mpa	250L/min	1500W	15L	AC220V	23KG
AC991	0.3-1.2Mpa	250L/min	1500W	36L	AC220V	27KG
AC992	0.3-1.2Mpa	500L/min	1500WX2	50L	AC220V	46KG
AC993	0.3-1.2Mpa	750L/min	1500WX3	70L	AC220V	65KG

Compressor Features



AC990

- | | |
|----------------------|-------------------|
| 1. LCD control panel | 4. AC Power Plug |
| 2. Silencer | 5. Drainage Valve |
| 3. Solenoid Valve | |



AC990-30L

- | | |
|----------------------|-------------------|
| 1. LCD control panel | 4. Air tank |
| 2. Silencer | 5. Drainage Valve |
| 3. AC power plug | |



AC990K

- | | |
|---------------------|--------------------|
| 1. LCD control pane | 4. Air Line Outlet |
| 2. Air tank | 5. Flow Valve |
| 3. Pull rod | 6. Drainage Valve |



AC990-10L

- | | |
|----------------------|-------------------|
| 1. Silencer | 4. Sensor |
| 2. LCD control panel | 5. Solenoid Valve |
| 3. AC power plug | 6. Air tank |



AC990X1

- | | |
|----------------------|--------------------|
| 1. LCD control panel | 4. Silencer |
| 2. Sensor | 5. Air Line Outlet |
| 3. Air tank | 6. Drainage Valve |



AC991

- | | |
|---------------------|--------------------|
| 1. LCD control pane | 4. Silencer |
| 2. Sensor | 5. Air Line Outlet |
| 3. Air tank | 6. Drainage Valve |



AC992

1. LCD control pane	4. Air tank
2. Safety Valve	5. Silencer
3. Air Line Outlet	6. Drainage Valve



AC992

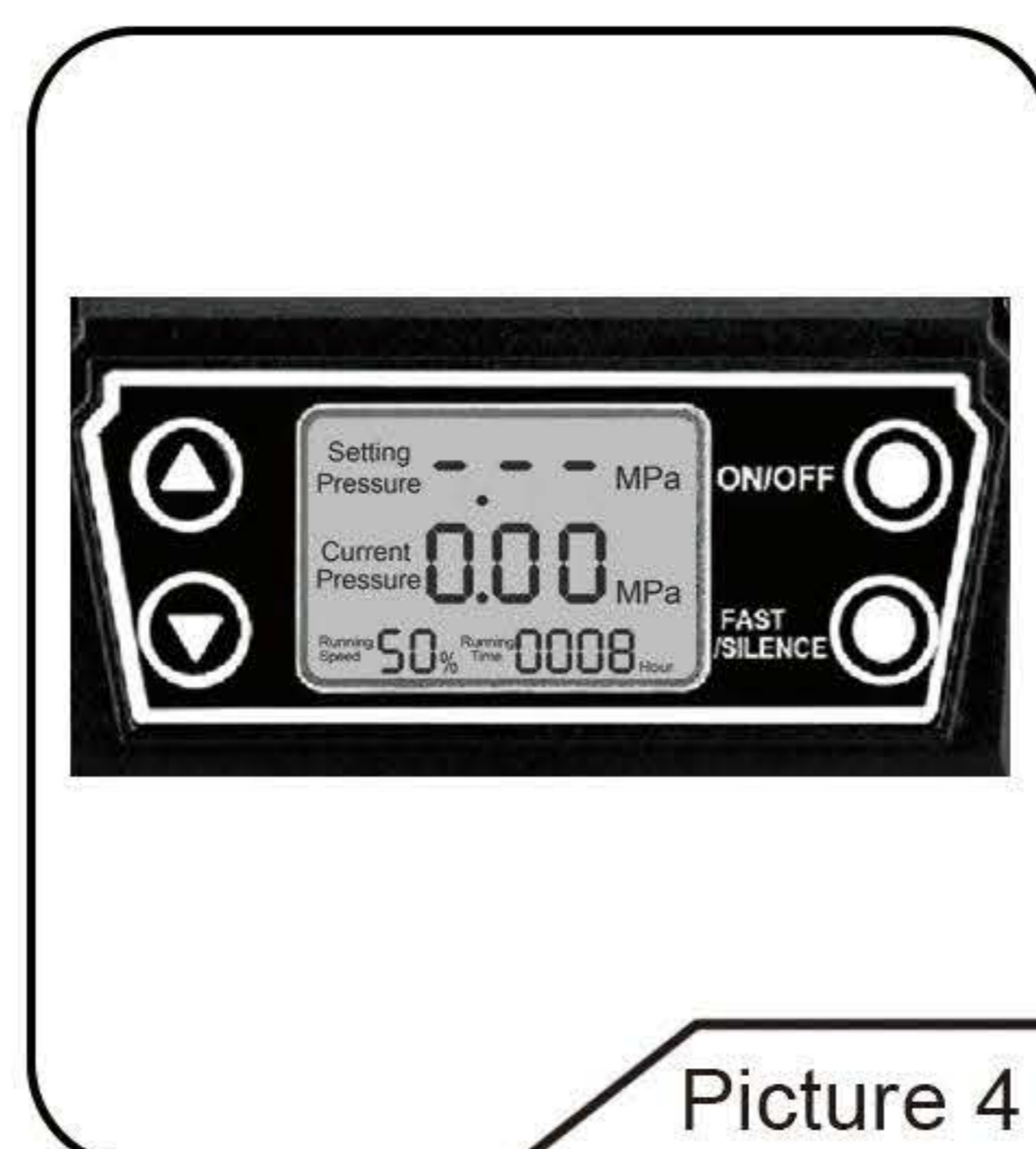
1. Silencer	4. Air Line Outlet
2. LCD control pane	5. Air tank
3. Safety Valve	6. Drainage Valve

Operating manual of compressor liquid crystal plate

After plug the power supply, the liquid crystal screen of operating panel will lighting, the machine will has 5s system measure time, the liquid crystal screen indicate effect(shown as picture 3). When the liquid crystal set pressure indicate “---” indicate the effect means machine enter into power on but close machine status, can operate the operate panel after enter into close machine status.(Shown as picture 4)



Picture 3



Picture 4

Operating manual of compressor liquid crystal



Press on operating panel: “ON/OFF” key start machine, can increase set pressure through press the “▲” key on the operating panel after start machine, each one time press increase 0.05MPa, when set pressure smaller or equal 0.3MPa, each one time press increase 0.02MPa. Reduce the set

pressure through press the “▼” key on the operating panel. The machine will automatically stop after the air supply pressure value achieve set pressure value, the machine will automatically start when the air supply pressure value lower than 10% of set pressure value after air ventilate, short time not use or occur failure can press the “ON/OFF” key on the operating panel to close the machine.

The liquid crystal screen indicate effect (shown as picture 3). This machine has mute and high speed two modes, can press “Mute/high speed” button circle shifting mode.



99%=Fast



50%=Silence

This machine has mute and high speed modes, can press “Mute/high speed” button circle shifting mode, high speed mode fast supply air, mute mode small noise.

Maintenance(Should cut off the power supply and completely exhaust air pressure before process all maintenance works, otherwise, it will caused dangerous)

1. Please keep machine clean, should fix time process washing maintenance for machine.
2. Completely exhaust the dirty water in the gas storage vessel, at least one time per week, the pressure in the gas storage vessel when exhaust dirt water should smaller than 0.1MPa.
3. Frequently check whether safety valve sensitivity, safety valve able to air ventilate easily.
4. Each use 100 hours, please disassemble the filter core of this muffle to clean or renewal, renewal skin bowl each use 500 hours, the liquid crystal screen will indicate running time.

Common failure code

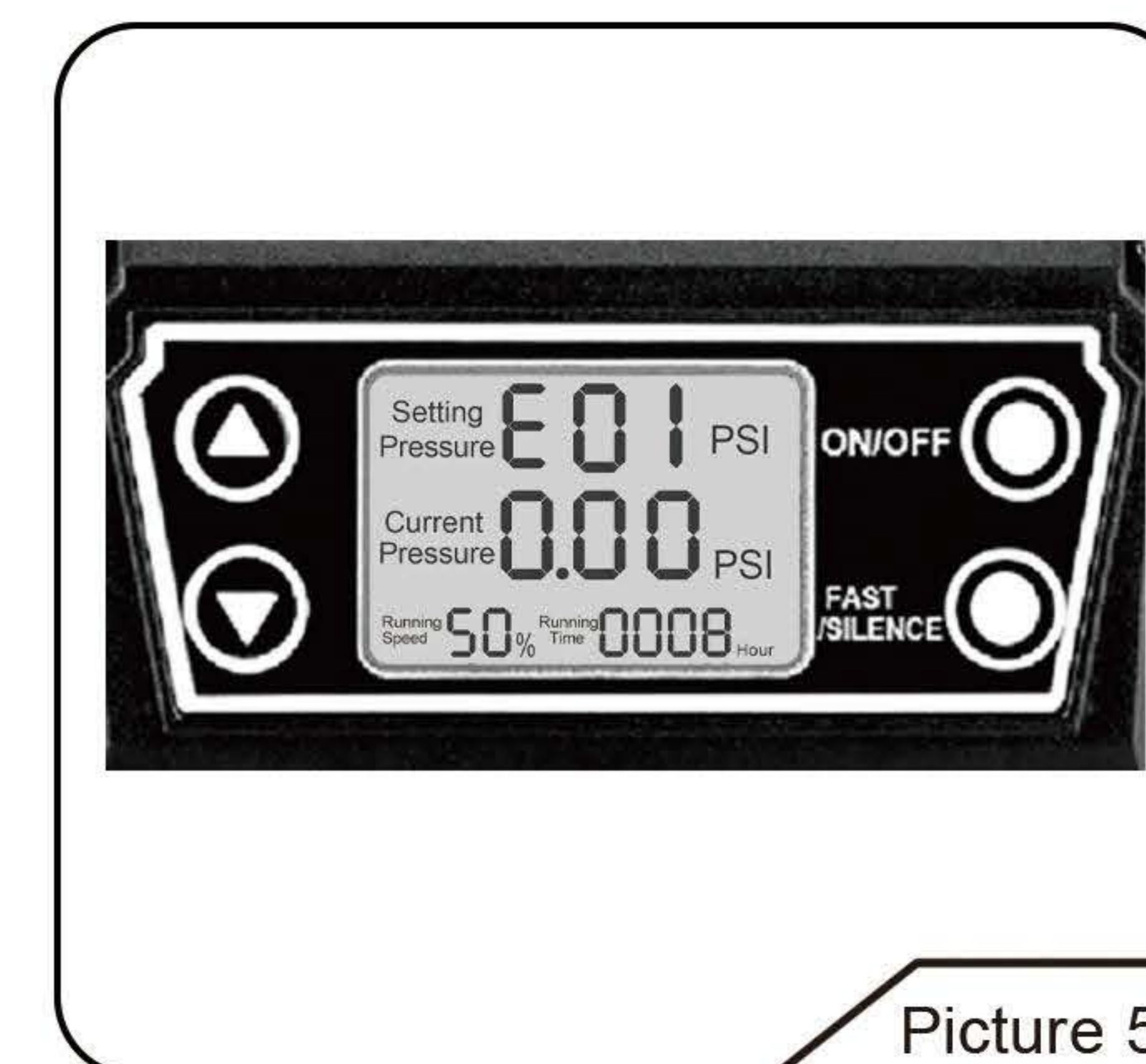
Will occur failure code at the liquid crystal screen set pressure value position when machine abnormal stop machine (Shown as picture 5)

E01-----Voltage lower than 100V or more than 120V

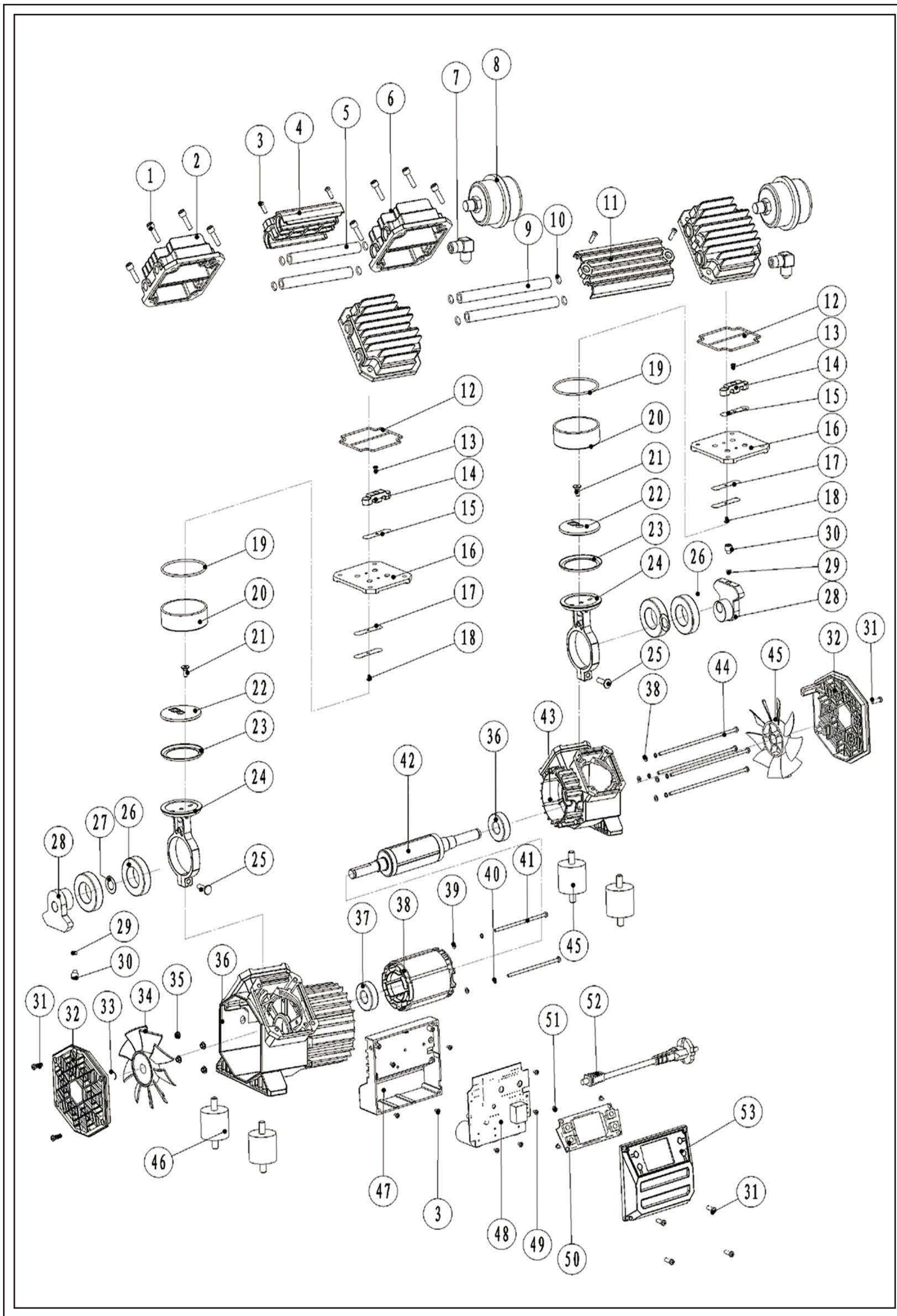
(The machine can' t start when voltage of lower than 100V or more than 120V)

E16-----Drive plate power module over heat protection

(It will occur when machine long time continue working, the machine unable to start during the protection period, it will automatically recover when temperature reduce under about 30s of common temperature environment)



Picture 5



S/N	CODE	Specification	quantity
1	1330046	Hexagonal nail M6*25	16
2	2500488	Up lid (LEFT)	1
3	1310007	Cross nail M4*16	4
4	4100951	Handle	1
5	2500486	Pipe 12.6*103.5	2
6	2500489	Up lid(RIGHT)	1
7	2190152	Connector	2
8	2190149	Silencer	2
9	2500487	Pipe 12.6*133.5	2
10	4200163	O type washer10*2	9
11	4100950	Handle	1
12	4200171	square washer DC900	2
13	2500455	Valve pressor	4
14	2200314	Valve plate 14*50*0.1	4
15	2500454	Middle lid	4
16	2200315	Valve plate 14*50*0.08	8
17	2200316	Washer 10*12*0.6	4
18	1310046	Cross mail M4*88	4
19	4200162	O type washer 63*3	4
20	2130045	gas clinder 69*63.7*24.5	4
21	1360001	Hexagonal screr M6*16	4
22	2500456	Cup plate	4
23	4200165	Cup 48*68*0.08	4
24	2500457	Piston	4
25	1330047	Heagonal Nail M8*20	4
26	1100141	Bearing 6006 RS/SYBS	4
27	1400048	Washer 30*40*2	2
28	2190170	Crank	2
29	2200317	Lock plate	2
30	1340007	Hexagonal nail M8*10	2
31	1310070	Cross nail M4*16	8
32	4100902	Impeller Cover	2
33	1500015	Bearing washer 14	2
34	4100903	Impeller A	1
35	1600029	Hexagonal Scew M5	4
36	2500490	Case body 1	1
37	1100142	Bearing 6203RS/CW	2
38	3110168	stator	1
39	1410061	wssher 5	6
40	1410067	ring 5	6
41	1310073	Cross nail M5*100	2
42	3110169	Rotor	1
43	2500491	Case body 2	1
44	1350043	Hexagonal nail M5*145	4
45	4100904	Impeller B	1
46	4200167	Rubber foot	4
47	2500449	Alu.Case of driver	1
48	3900199	Driver PCB	1
49	1310065	Cross nail M3*10	5
50	3900271	LCD PCB	1
51	1200041	Cross nail ST2.5*8-c	4
52	3210111	3C Cable 3*1*2.6m	1
53	4100905	Cover of driver 1	1