

**THANK YOU FOR USING TIECHENG
BRUSHLESS PROFESSIONAL GRADE POWER TOOLS!**

TC·BL

Tiecheng Brushless

BRUSHLESS AIR COMPRESSOR

Manual book



TC·BL
Tiecheng Brushless

Zhejiang Tichop Tools Co.,Ltd

Add: Huacheng West Road 337,West City New Area,
Yongkang City Zhejiang Province,China.

Tel: 0086-579-87713236 Fax: 0086-579-87713056

AC660/AC661/AC662

Safety instruction

To avoid fire,hurt body,electric shock and other accidents,Pls read and follow the safe instruction before using it.

- 1.Keep the work place clean.
- 2.Do not put the machine in wet or harsh condition place(dusty or full of explosive gas)
- 3.Electric shock: Do not touch the grounded objects.For example the conduit pipe,heating pipe,etc.
- 4.Kids and unrelated people do not close to the machine when its working.
- 5.Taking care of the machine when you don't use it. Pls release the air and dust water from tank and put it in the dry place.
- 6.Pls follow the rating volt,speed.
- 7.Protection of cable:don't tighten the power cable and keep distance of hot resource and oil.
- 8.Maintance:clean the filter,check the cable and accessories.If not good,pls exchange it.
- 9.Pls turn off power source and the switch of the air compressor.When you not use it.
- 10.Avoid over-pressure setting:The maximum pressure is 0.9 MPa.
- 11.Warning:Pls use our factory's parts for repair.
- 12.Power volt:Pls check the volt,Such as 180V-250V,if Not right,The machine will be damaged by abnormal volt.
- 13.The compressor is only for the air pressurize,not for other gas,dust or explosive material.
- 14.Don't use forced flammable and combustibile air and liquid.
- 15.Don't torch the hot parts of compressor.Such as the Cover of motor,Echaust pipe.etc.
- 16.The cable section is not less than.2 square mm and not need too long.
- 17.It is forbidden to crash.Pls put it suitable position when you work it.

Main Parameter

Modle	Pressure	Flow	Power	Air tank	Voltage	N.W.
AC660	0.3-0.9Mpa	125L/min	1000W	0L	220V	7.5KG
AC661	0.3-0.9Mpa	125L/min	1000W	7L	220V	12KG
AC662	0.3-0.9Mpa	125L/min	1000W	24L	220V	15KG

Compressor Features



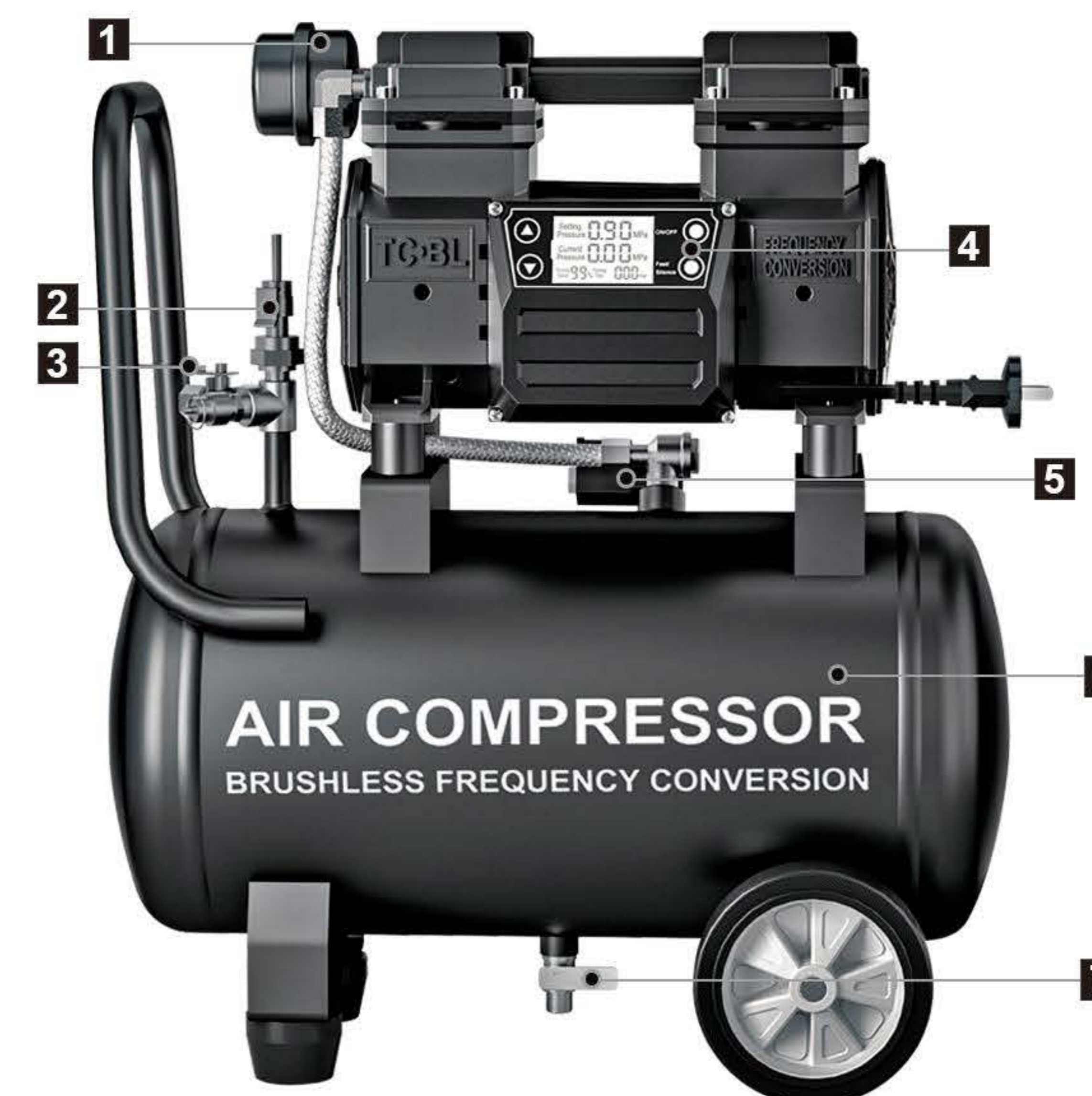
AC660

1. Air Line Outlet	4. Silencer
2. Sensor	5. Solenoid Valve
3. Switch	6. LCD control panel



AC661

1. Silencer	4. LCD control panel
2. Sensor	5. Solenoid Valve
3. Safety Valve	6. Air tank(7L)



AC662

1. Silencer	4. LCD control panel
2. Sensor	5. Solenoid Valve
3. Safety Valve	6. Air tank(24L)
7. Drain valve	

LCD Controller system



1. Pressure setting scope: 0.3-0.9Mpa
2. Please choose the right voltage 180V-250V.
3. On/Off button is start and stop the machine.
4. Fast/Silence button is to adjust the working speed. The fast speed is 3000rpm, The silence speed is 1500rpm. Fast Mode: running speed 99% (photo 1), Silence Mode: running speed 50% (photo 2).
5. The left "▲" and "▼" button is adjust the setting pressure. One time can adjust 0.05Mpa. If the setting pressure is 0.9Mpa. when the pressure is lower than 0.7Mpa. The machine will start at once.
6. When not use, please press on/off button then stop the machine.

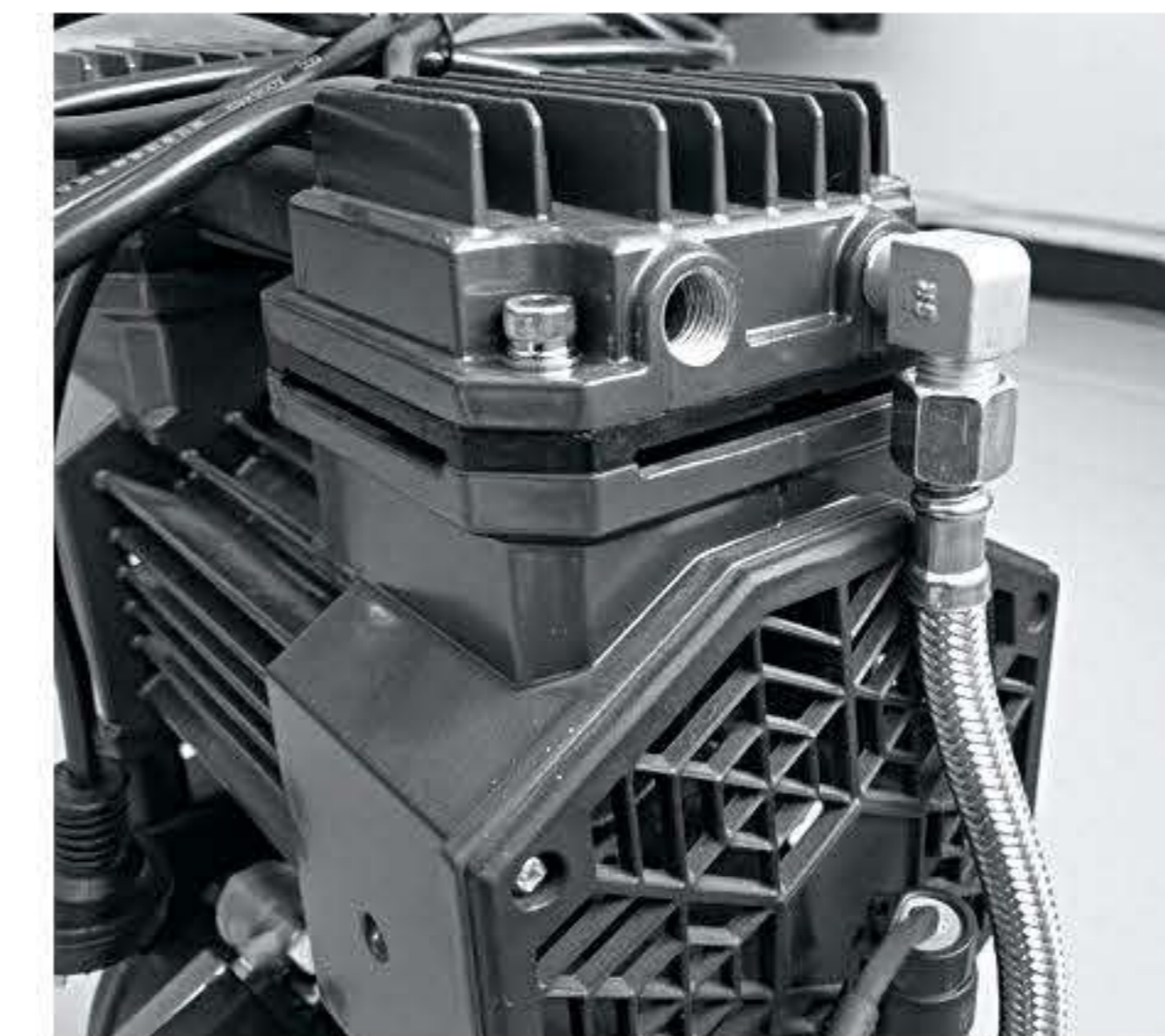


99%=Fast



50%=Silence

Notice for use



1. When unwrapped from carton, pull up the stopper.



2. Install the silencer.

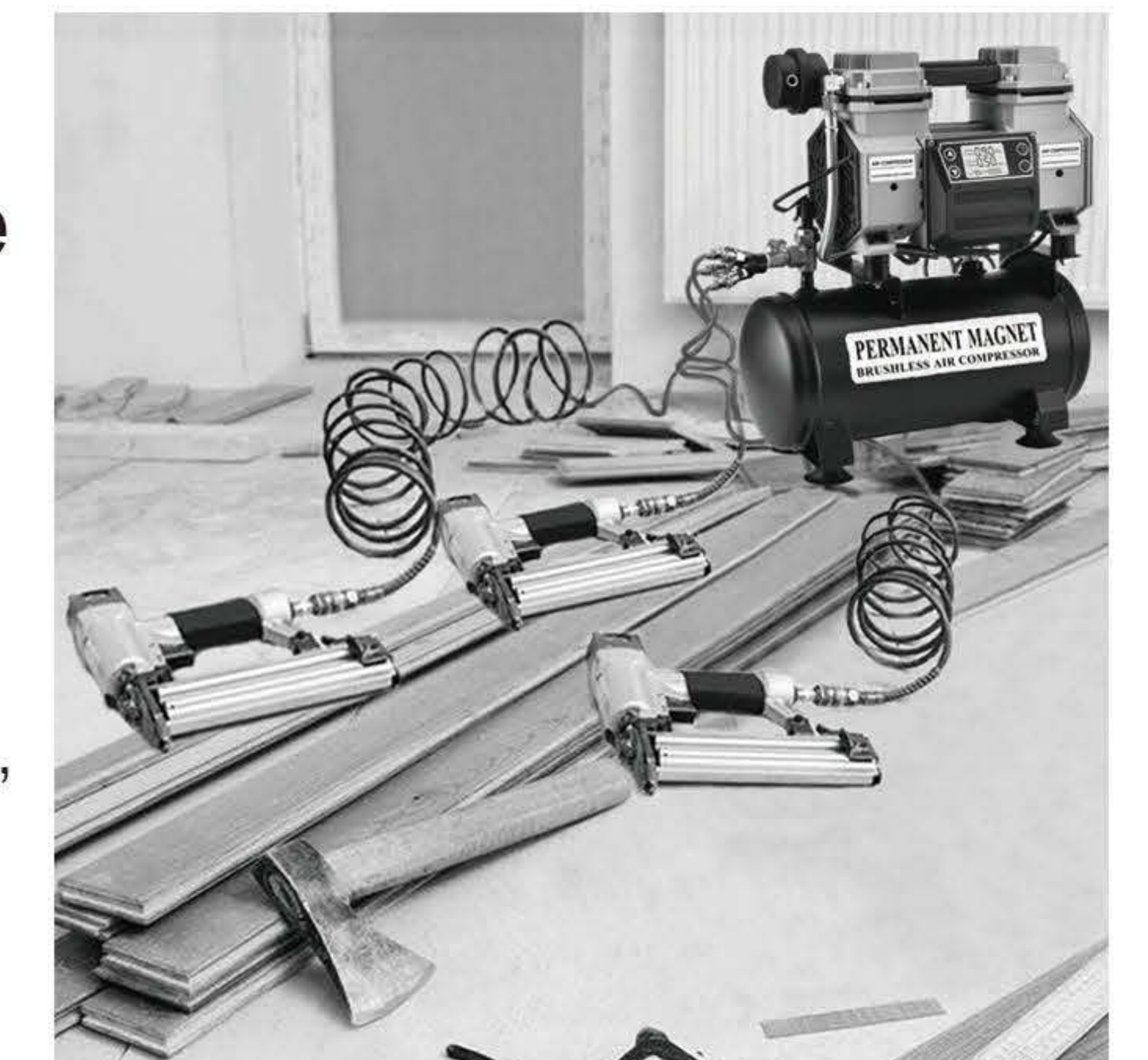


3. At first, connect the air tools you need, then start the machine.

Efficiency and Use scope

Max. Loading Power could drive 3 pcs F30 Pneumatic Nailer

Application: Woodworking Pneumatic Nailer, Tire air charging, Pneumatically cleaning dust, Pneumatic Screwdriver.



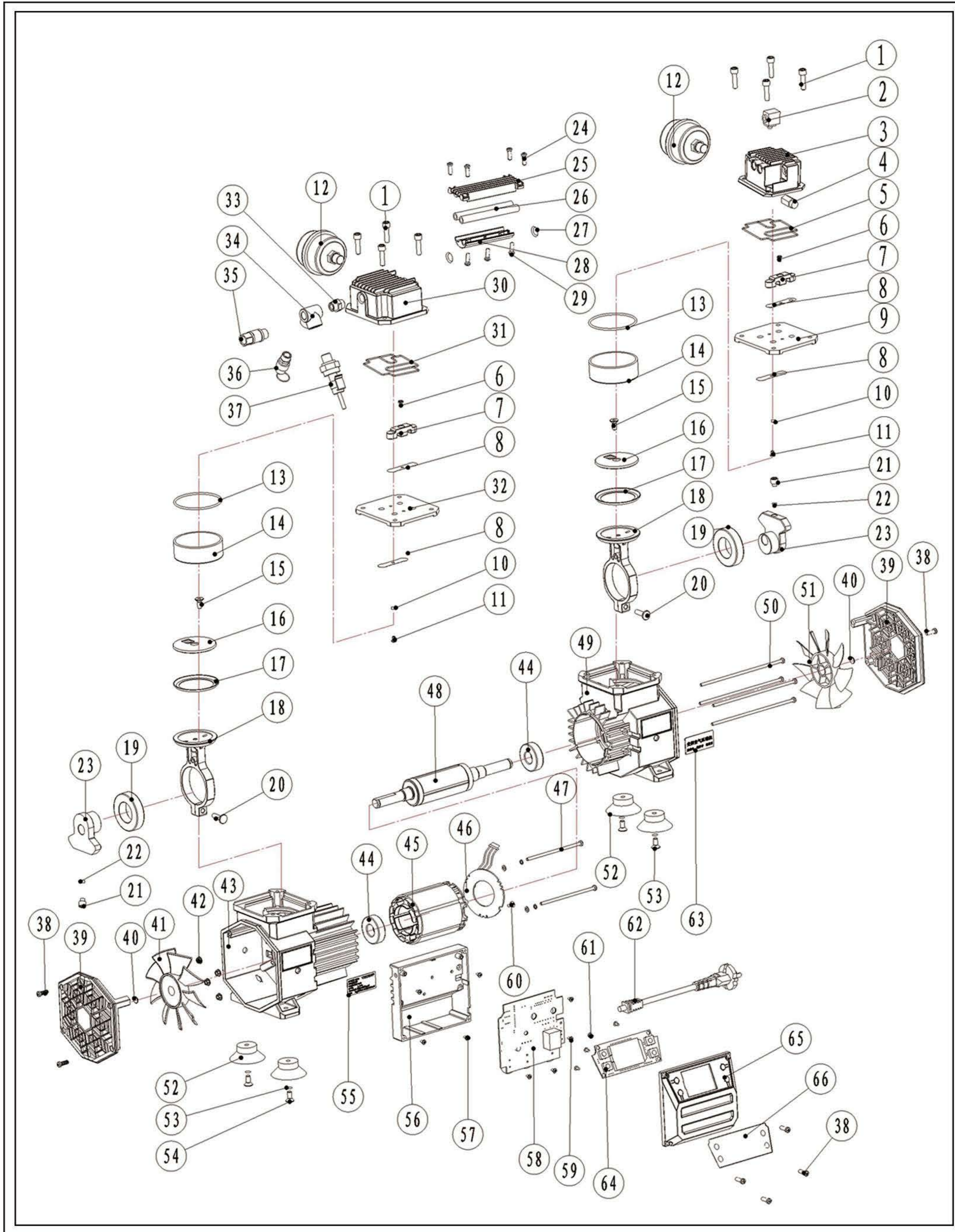
Maintenance

ATTENTION:

- All of maintenance process must be stop the power and exhausted all of air. Or, it will be hurt your body.
1. Please keep the cleaning machine, timely maintenance.
 2. Safety valve: regularly check, if not good, replace it.
 3. Cleaning the silencer's filter for 500 hrs per time. Piston cup exchange for 5000 hrs. The LCD can show the work time.

Fault code

1.E01--Overvoltage or low-voltage protection.



S/N	CODE	NAME&SPECIFICATION	QUANTITY	S/N	CODE	NAME&SPECIFICATION	QUANTITY
1	1330033	Hexagonal nail M6X30 (three)	8	45	3110161	Stator	1
2	3900397	Solenoid valve group	1	46	3900380	Hall plate	1
3	2500690	Up lid(right)	1	47	1310068	Cross recessed pan head screw M4×95	2
4	2190268	Check valve	1	48	3110162	Rotor	1
5	4200219	Square washe(right)	1	49	2500453	Tank 2	1
6	1310049	Cross recessed pan head screw	2	50	1310069	Cross recessed pan head screw M4×145	4
7	2500693	Piston cup fastener	2	51	4100904	Fans B	1
8	2200417	Valve block	4	52	4200164	Rubber shock pad	4
9	2500697	Center cover(right)	1	53	1400066	Gasket 6X 14X1	4
10	2200316	Small square gasket 10X12X0.6	2	54	1310032	Cross recessed pan head screw M6×20	4
11	1310084	Cruciform head head screw	2	55	5400867	Power label	1
12	2190149	Silencer	2	56	2500449	Aluminium case for main board	1
13	4200162	O-ring 63X 63	2	57	1310040	Cross recess pan head screw M4×14(three)	4
14	2130045	Cylinder 69X 63.7X24.5	2	58	3900382	Main board	1
15	1360003	Hexagon socket countersunk head screws M8X20	2	59	1310065	Cross recess pan head screw M3×10(three)	5
16	2500699	Piston cup fastener(right)	1	60	1200040	Cross recessed pan head tapping screw ST2×6-C	3
17	4200165	Piston cup 48X 68X0.8	2	61	1200053	Cross recessed pan head tapping screw ST2.5×8-C	4
18	2500457	Piston	2	62	3210097	Power line with jacket 3×0.75×2.6m	1
19	1100141	Deep groove ball bearing6006RS/SYBS	2	63	5400868	Nameplate	1
20	1330047	Hexagon socket cap screwsM5×20	2	64	3900344	LCD control pannel	1
21	1340006	Hexagon socket set screw M8	2	65	4100905	Cover of main board	1
22	2200317	Fastener	2	66	5400869	Label for operation	1
23	2190143	Crank	2				
24	1310040	Cross recess pan head screw(three)	4				
25	4101032	Handle	1				
26	2190148	Aluminium pipe 12.6X117.5	2				
27	4200163	O-ring 10X 2	4				
28	4101033	Handle cover	1				
29	1200005	Cross recessed pan head tapping screws ST4X16	3				
30	2500691	Up cover(left)	1				
31	4200218	Square washer(left)	1				
32	2500696	Center cover(right)	1				
33	2190144	Straight joint(G1/4)	1				
34	2190145	Copper four-way connection(G1/4)	1				
35	2190189	Coupling(G1/4)	1				
36	2190165	Safety valve(G1/4)	1				
37	3900371	Sensor(G1/4)	1				
38	1310080	Cross recess pan head screw M4×14	8				
39	4100902	Fans cover	2				
40	1500015	Shaft ring 14	2				
41	4100903	Fan A	1				
42	1600026	Hexagon nut with flange M4	4				
43	2500452	Tank 1	1				
44	1100142	Deep groove ball bearing 6203RS/CW	2				